



Do observed sex ratios in a turtle community in northern Indiana vary over 35 years (1979–2014)?

^{1,*}Geoffrey R. Smith, ²John B. Iverson, and ¹Jessica E. Rettig

¹Department of Biology, Denison University, Granville, Ohio 43023 USA ²Department of Biology, Earlham College, Richmond, Indiana 47374 USA

Abstract.—Anthropogenic changes to the environment (e.g., climate change, roads, habitat alteration) can cause sex ratios in freshwater turtles to differ from the expected 1:1 ratio. We examined long-term trends in the sex ratios of five species of freshwater turtles in Dewart Lake in northern Indiana from 1979 to 2014. None of the species (*Chelydra serpentina*, *Chrysemys picta*, *Graptemys geographica*, *Trachemys scripta elegans*, and *Sternotherus odoratus*) showed significant temporal trends in sex ratio, and indeed they all showed remarkably consistent sex ratios (i.e., proportion of males). Overall, the mean proportion of males did not differ significantly from 0.5 in *C. picta*, *G. geographica*, or *T. s. elegans*, while both *C. serpentina* and *S. odoratus* had significantly male-biased sex ratios. Our failure to observe any changes in the sex ratios over the course of our study does not preclude an impact of the anthropogenic factors on these species of turtles, but suggests that they are not influencing sex ratios in a systematic way in Dewart Lake.

Keywords. *Chelydra serpentina*, *Chrysemys picta*, *Graptemys geographica*, populations, Reptilia, *Sternotherus odoratus*, temporal trends, *Trachemys scripta elegans*

Citation: Smith GR, Iverson JB, Rettig JE. 2022. Do observed sex ratios in a turtle community in northern Indiana vary over 35 years (1979–2014)? *Amphibian & Reptile Conservation* 16(1) [General Section]: 193–202 (e309).

Copyright: © 2022 Smith et al. This is an open access article distributed under the terms of the Creative Commons Attribution License [Attribution 4.0 International (CC BY 4.0): <https://creativecommons.org/licenses/by/4.0/>], which permits unrestricted use, distribution, and reproduction in any medium, provided the original author and source are credited. The official and authorized publication credit sources, which will be duly enforced, are as follows: official journal title *Amphibian & Reptile Conservation*; official journal website: amphibian-reptile-conservation.org.

Accepted: 5 February 2021; **Published:** 12 April 2022

Introduction

Animal populations are generally expected to have a 1:1 sex ratio (Fisher 1958). However, anthropogenic factors can potentially cause the sex ratios in a variety of animals, including freshwater turtles, to vary from the expected 1:1 ratio (e.g., Smith and Iverson 2006; Lambertucci et al. 2012; Mondol et al. 2014; Sharma et al. 2014). One major factor that may alter the sex ratios in freshwater turtles with temperature-dependent sex determination is an increase in global temperatures due to anthropogenically-driven climate change (Butler 2019; Janzen 1994; Schwanz et al. 2010). In addition, predicted increases in the variations of temperatures, including increases in the frequency and intensity of heat waves, will potentially have effects on freshwater turtle sex ratios (Carter et al. 2018; Neuwald and Valenzuela 2011; Valenzuela et al. 2019). Changes in precipitation during the nesting period may also influence the sex ratios of freshwater turtles (LeBlanc and Wibbels 2009; Sifuentes-Romero et al. 2018).

Beyond the effects of climate change, other anthropogenic changes in the environment can affect the sex ratios of freshwater turtles. Increased road mortality

of freshwater turtles, especially nesting females, can shift sex ratios making them more male-biased, sometimes extremely so (e.g., Aresco 2005; DeCatanzaro and Chow-Fraser 2010; Dupuis-Déormeaux et al. 2017, 2019; Mali et al. 2013; Marchand and Litvaitis 2004; Nicholson et al. 2020; Piczak et al. 2019; Steen and Gibbs 2004; Winchell and Gibbs 2016). However, Dorland et al. (2014) and Vanek and Glowacki (2019) found no relationships between male-biased sex ratios in *C. picta* populations and either road density or other similar factors. Agriculture adjacent to ponds and lakes can alter freshwater turtle sex ratios by changing the thermal conditions of the nest (e.g., Freedberg et al. 2011; Thompson et al. 2018). In addition, any alteration of vegetation cover and canopies at nesting sites can also impact the sex ratios of freshwater turtles (Freedberg and Bowne 2006; Marchand and Litvaitis 2004; Weisrock and Janzen 1999), as can changes in nesting substrate (e.g., sand, soil, gravel; Mitchell and Janzen 2019). Such changes in nest-site characteristics can occur when residential development occurs near freshwater turtle nesting areas (Kolbe and Janzen 2002), and urbanization has been shown to alter the thermal environments of nests leading to sex ratio biases (Bowne et al. 2018;

Correspondence. *smithg@denison.edu

but see Vanek and Glowacki 2019). Thus, increasing anthropogenic influences on the environment can have significant impacts on the sex ratios of freshwater turtles. Such variations from a 1:1 sex ratio can have conservation implications for the long-term persistence of freshwater turtle populations (Gibbons et al. 2000).

We examined the long-term trends in sex ratios of five species of freshwater turtles in Dewart Lake in northern Indiana in 30 different years within a 35-year study period (1979–2014). The species investigated were: Common Snapping Turtles (*Chelydra serpentina*), Painted Turtles (*Chrysemys picta*), Common Map Turtles (*Graptemys geographica*), Red-eared Sliders (*Trachemys scripta elegans*), and Common Musk Turtles (*Sternotherus odoratus*). Turtle populations have been studied in Dewart Lake for over 50 years (see Wade and Gifford 1965), and the populations of the different species of turtles have been under relatively regular study from 1979–2014 (*C. serpentina*: Smith and Iverson 2004; Smith et al. 2006, 2018; *C. picta*: Smith et al. 2017, 2018, 2020; *G. geographica*: Iverson et al. 2019; Smith et al. 2018, 2020; *S. odoratus*: Smith and Iverson 2004; Smith et al. 2006, 2017; and *T. s. elegans*: Lewis et al. 2018; Smith et al. 2018, 2020). All of the species we examined have temperature-dependent sex determination (*C. serpentina*, Ewert et al. 2005; Janzen 1992; Rhen and Lang 1998; St. Juliana et al. 2004; *C. picta*, Ewert et al. 2004; Rhen and Lang 1998; Schwarzkopf and Brooks 1985, 1987; *G. geographica*, Bull 1985; Vogt and Bull 1984; *S. odoratus*, Ewert et al. 2004; and *T. s. elegans*, Carter et al. 2017; Dodd et al. 2006), and thus their sex ratios might be influenced by any changes in environmental temperatures. There is evidence that the temperatures in Indiana have increased during the last quarter of the 20th century and the start of the 21st century, as has precipitation (Frederick 2018). In addition, the local environment around Dewart Lake has changed over the study period, including increased residential development, shoreline modification (i.e., concrete seawalls, increased coverage by manicured lawns), and improved recreational facilities (e.g., paved boat launches), as well as increased road and boat traffic (J.B. Iverson, G.R. Smith, and J.E. Rettig, pers. obs.). These are all changes that could potentially alter the sex ratios of the freshwater turtles in Dewart Lake.

Materials and Methods

This study examined the freshwater turtle community in Station Bay (area = 4.5 ha) in the SE corner of Dewart Lake near Syracuse, Kosciusko County, Indiana, USA. Turtles were surveyed in late July to early August nearly annually from 1979 to 2014, for a total of 30 years of sampling effort. Prior to 1992, all trapping was carried out with aquatic wire funnel traps (n = 5 to 15; see Iverson 1979 for design). Starting in 1993, all trapping used 2.5 cm mesh fyke nets (n = 2 to 12) with 15 m (50') leads between a pair of 90 cm (3') hoop-diameter funnel

traps (although a single fyke net and multiple wire traps were used in the transitional year of 1992). Traps were checked every 2–3 hours from sunrise until 1–2 hours post-sunset. No turtles entered the traps during the night (Smith and Iverson 2004). All captured turtles were sexed, retained, and subsequently released at the end of each sampling period (2–5 days). Males were sexed based on the presence of the following secondary sex characteristics for each species (also see Ernst and Lovich 2009): *C. serpentina* plastron shape, relative location of cloaca on tail (Mosimann and Bider 1960); *C. picta* relative tail size, elongated foreclaws (Smith et al. 2017); *G. geographica* tail length, placement of cloacal opening (Iverson et al. 2019); *S. odoratus* plastral size, tail size, scale patches on rear legs of males (Risley 1930); and *T. s. elegans* elongated foreclaws, tail length (Readel et al. 2008). Individuals without these characteristics, which were at or larger than the size at which male secondary sex characteristics would be apparent for each species, were considered females. By using these criteria, we were consistent across years in how the sex ratios were assessed relative to sexual maturity (see Lovich et al. 2014). In addition, for the four species which were permanently marked (*C. serpentina*, *C. picta*, *G. geographica*, and *T. s. elegans*), we were able to repeatedly sex individuals across years and confidently assign sex to individuals (and retrospectively adjust sex ratios as needed).

The proportions of males were tallied for *C. serpentina*, *C. picta*, *G. geographica*, *S. odoratus*, and *T. s. elegans* relative to the total number of individuals that were sexed each year. Trapping techniques can potentially show biases in terms of observed sex ratios (Browne and Hecnar 2005; Ream and Ream 1966; Thomas et al. 1999; see also Gibbons 1970, 1990; Lindeman 2013). However, since there is no reason to expect that any trapping bias would change over time, even if the observed sex ratios were potentially biased, they should allow for an assessment of the temporal changes in sex ratios. A trap type independent variable is included in the analyses to account for any possible effect of trap type on sex ratios. The observed sex ratios of trapped turtles can also vary seasonally due to sexual differences in activity (e.g., Moldowan et al. 2018; Vanek and Glowacki 2019). However, because trapping was always conducted during the same period each year (late July–early August), if such biases were present, they would have been constant throughout the study, and so any changes in observed sex ratios should reflect a change in the underlying sex ratio of the population.

The mean proportion of males across all years was compared to the expected 0.5 using a one-sample *t*-test for each species to determine whether there was a consistent bias in the sex ratios. For each species, a generalized linear model with a binomial distribution and logit link was used to examine the effects of year, trap type (e.g., fyke net year versus non-fyke net year), and total number of individuals examined per year on the proportion of

males. It is worth noting that trap type was not included for *C. serpentina* because this species was never caught in the wire funnel traps. An α value of 0.05 was used to indicate significance, and data are reported as mean \pm 1 S.E. The program JMP Pro 15.1 (SAS Institute Inc., Cary, North Carolina, USA) was used for all statistical analyses.

Results

Sample sizes. The overall mean (\pm 1 S.E.) annual sample sizes (including only years when at least one individual was captured) were:

- *C. serpentina*, 11.2 ± 1.5 ($n = 18$ years; range: 1–23);
- *C. picta*, 93.5 ± 11.4 ($n = 30$ years; range: 13–259);
- *G. geographica*, 12.5 ± 1.7 ($n = 28$ years; range: 1–42);
- *S. odoratus*, 79.0 ± 9.2 ($n = 30$ years; range: 4–189);
- *T. s. elegans*, 9.9 ± 1.3 ($n = 22$ years; range: 1–18).

Chelydra serpentina. The overall mean proportion of males by year was 0.66 ± 0.04 ($n = 18$), which is significantly different from 0.5 ($t_{17} = 3.56$, $p = 0.0024$). Using only years with > 10 individuals, the mean proportion of males was 0.69 ± 0.03 ($n = 10$), which is also significantly different from 0.5 ($t_9 = 5.86$, $p = 0.0002$). The proportion of males was not affected by year, trap type, or the total number of individuals (Table 1).

Chrysemys picta. The overall mean proportion of males by year was 0.47 ± 0.02 ($n = 30$), which is not different from 0.5 ($t_{29} = -1.52$, $p = 0.14$). Year, trap type, and the total number of individuals had no effect on the proportion of males found in a given year (Table 1).

Graptemys geographica. The overall mean proportion of males by year was 0.53 ± 0.04 ($n = 28$), which is not significantly different from 0.5 ($t_{27} = 0.69$, $p = 0.50$). The mean proportion of males in years with > 10 individuals was 0.46 ± 0.04 ($n = 14$), which is also not significantly different from 0.5 ($t_{13} = -0.94$, $p = 0.36$). The proportion of males in a year was not affected by year, trap type, or the total number of individuals (Table 1).

Sternotherus odoratus. The mean proportion of males by year was 0.66 ± 0.01 ($n = 30$), which is significantly

different from 0.5 ($t_{29} = 12.66$, $p < 0.0001$). The mean proportion of males in years with > 10 individuals was 0.65 ± 0.012 ($n = 28$), which is significantly different from 0.5 ($t_{27} = 12.33$, $p < 0.0001$). The proportion of male *S. odoratus* observed in a year was not affected by year, trap type, or the total number of individuals caught (Table 1).

Trachemys scripta elegans. The mean proportion of males by year was 0.44 ± 0.04 ($n = 22$), which is not significantly different from 0.5 ($t_{21} = -1.38$, $p = 0.18$). If only years with > 10 individuals are considered, the mean proportion of males was 0.47 ± 0.06 ($n = 10$), which was not significantly different from 0.5 ($t_9 = -0.57$, $p = 0.58$). Year, trap type, and total number of individuals had no significant effects on the proportion of male *T. s. elegans* in a given year (Table 1).

Discussion

Over the course of our study (1979–2014), none of the five species (*C. serpentina*, *C. picta*, *G. geographica*, *S. odoratus*, and *T. s. elegans*) showed a significant temporal trend in sex ratio, and indeed they each showed remarkably consistent sex ratios (i.e., proportion of males) across the study period (Fig. 1). A previous analysis of the temporal variation in the sex ratio in *S. odoratus* in Dewart Lake also found a consistent male-bias from 1979–2000 (Smith and Iverson 2002). Previous studies of sex ratio trends in freshwater turtles have often reported shifts in the sex ratios, but they have ascribed these shifts to a variety of reasons. For example, there has been a significant trend for increased male bias in the sex ratio of freshwater turtles in the United States from 1928 to 2003, which has been ascribed to increases in road density (Gibbs and Steen 2005; see also citations in the **Introduction** related to road mortality). In addition, Tucker et al. (2008) found that the sex ratio of *T. s. elegans* became more male biased over their 13-year study, probably due to the warming trends during the course of their study leading to an expansion of the nesting period to include additional clutches laid during the part of the season that produces males. Jones (2017) found shifts from a male-biased sex ratio before 2000 to unbiased sex ratios after 2000 in *Graptemys oculifera*,

Table 1. Results of generalized linear models examining the effects of year, trap type (fyke net versus non-fyke net years), and number of individual turtles examined on the proportion of males observed in a given year for each of the five species of freshwater turtles from Dewart Lake. n is the number of years with data for each species.

Species	n	Intercept	Year	Trap type	Number of individuals	Whole model P
<i>Chelydra serpentina</i>	18	-36.1	0.018	—	0.05	0.78
<i>Chrysemys picta</i>	30	-18.3	0.009	-0.25	0.001	0.99
<i>Graptemys geographica</i>	28	-16.6	0.008	-0.12	-0.03	0.92
<i>Sternotherus odoratus</i>	30	-16.2	0.008	-0.06	-0.002	0.998
<i>Trachemys scripta elegans</i>	22	-90.0	0.045	0.49	-0.02	0.67

Turtle sex ratios in Indiana (1979–2014)

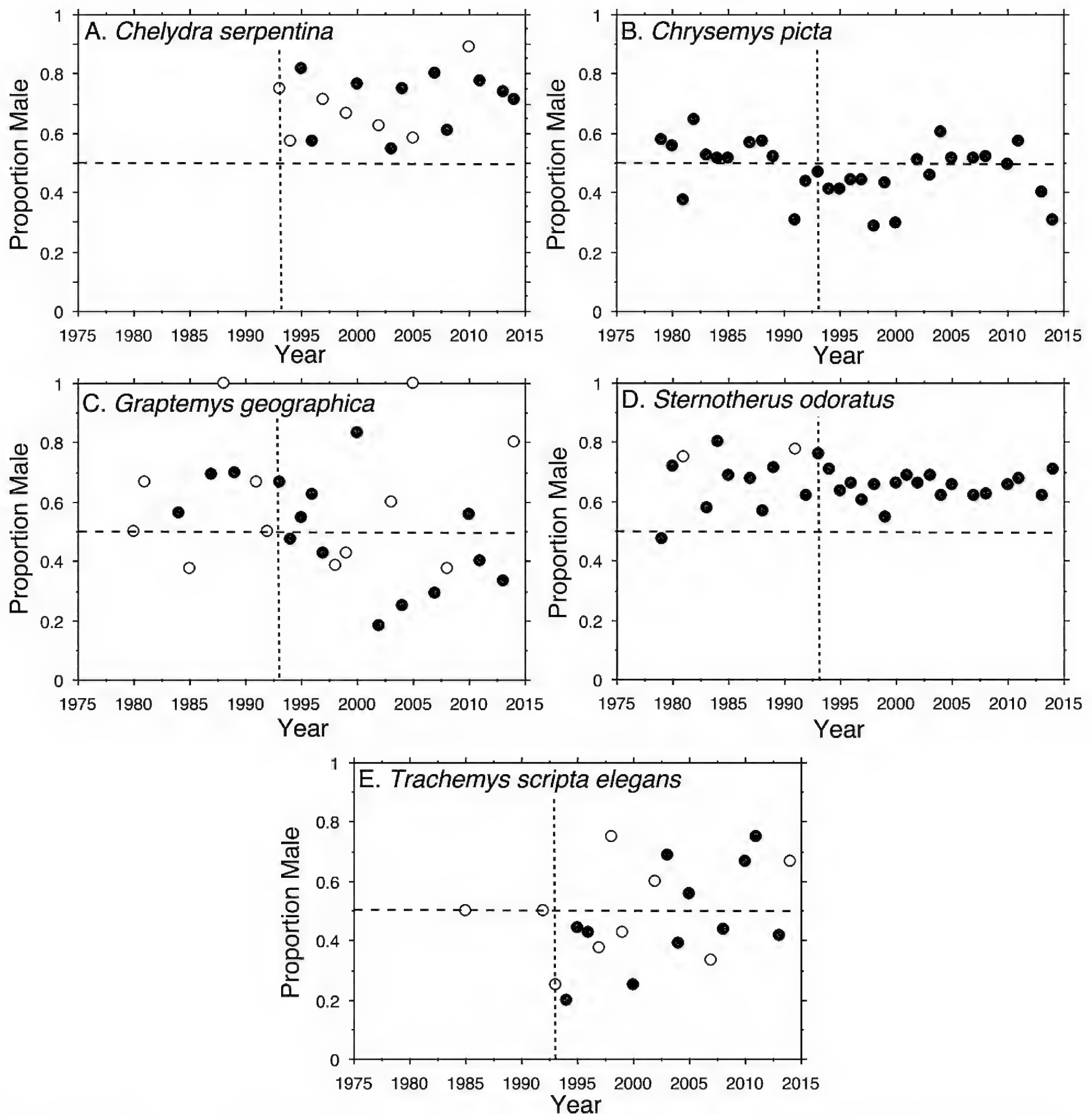


Fig. 1. Proportions of males for (A) *Chelydra serpentina*, (B) *Chrysemys picta*, (C) *Graptemys geographica*, (D) *Sternotherus odoratus*, and (E) *Trachemys scripta elegans* over the course of the 37-year study in Dewart Lake, Indiana, USA. Open circles indicate years when < 10 individuals were captured, and closed circles indicate years when ≥ 10 individuals were captured. The vertical dashed lines indicate the transition from non-fyke net years to fyke net years, and the horizontal dashed lines represent a 1:1 sex ratio (i.e., 50% males).

possibly due to greater predation on the males, which are smaller than the females. The observed sex ratio in *T. scripta* in South Carolina varied among years (from the late 1960s to the mid-1980s) but with no significant directional temporal trend (Gibbons 1990). A study in Spain found that the sex ratio of *Emys orbicularis* was fairly constant from 1997 to 2018 in one region, but showed a recent increase in male bias in another region (Escoriza et al. 2020). The tendency in observed shifts in turtle sex ratios that have been reported in previously

published studies may be a result of publication bias, with studies showing no change in sex ratios simply not being published. The paucity of long-term studies on turtle populations also likely contributes to uncertainty regarding how the sex ratios are changing (or not) in turtle populations.

Overall, the mean proportion of males in this study did not differ significantly from 0.5 (i.e., on average it was not significantly different from a 1:1 sex ratio) in *C. picta*, *G. geographica*, and *T. s. elegans*. In contrast,

Table 2. Populations of the turtle species found in Dewart Lake (Indiana, USA) that have been reported to exhibit biased or unbiased observed sex ratios by US state or Canadian province.

Species	Male-biased	Unbiased	Female-biased
<i>Chelydra serpentina</i>	Minnesota (DonnerWright et al. 1999)	Florida (Aresco and Gunzburger 2007; Johnston et al. 2008)	
	Missouri (Glorioso et al. 2010)	Illinois (Cagle 1942)	
	North Carolina (Hanscom et al. 2020)	Michigan (Lagler and Applegate 1943)	
	Ontario (Galbraith et al. 1988)	Ontario (Galbraith et al. 1988)	
		Quebec (Mosimann and Bider 1960)	
	Tennessee (Froese and Burghardt 1975)		
	West Virginia (Major 1975)		
<i>Chrysemys picta</i>	Illinois (Refsnider et al. 2014; Vanek and Glowacki 2019)	Michigan (Gibbons 1968)	Idaho (Lindeman 1996)
		Washington (Lindeman 1996)	Illinois (Cagle 1942)
	Minnesota/Wisconsin (DonnerWright et al. 1999)	Minnesota (Refsnider et al. 2014)	Michigan (Sexton 1959)
	New York (Bayless 1975)	Missouri (Glorioso et al. 2010)	Ontario (Balcombe and Licht 1987)
	Ontario (DeCatanzaro and Chow-Fraser 2010)	New Mexico (Refsnider et al. 2014)	
	Quebec (Dupuis-Désormaux et al. 2017)	New York (Zweifel 1989)	
	Wisconsin (Ream and Ream 1966)	Ontario (DeCatanzaro and Chow-Fraser 2010)	
<i>Graptemys geographica</i> (also reviewed in Lindeman 2013, Table 4.22)	Pennsylvania (Pluto and Bellis 1986)	Illinois (Anderson et al. 2002)	Ohio (Tran et al. 2007)
	Quebec (Gordon and MacCulloch 1980; Flaherty 1982)	Indiana (Conner et al. 2005)	Ontario (Browne and Hecnar 2007; Bennett et al. 2009)
	Wisconsin (Vogt 1980)	Minnesota/Wisconsin (DonnerWright et al. 1999)	
		Missouri (Pitt and Nickerson 2012)	
	Ontario (Barrett Beehler 2007; Bulté and Blouin-Demers 2009)		
<i>Sternotherus odoratus</i>	Florida (Aresco 2005)	Florida (Aresco 2005)	Alabama (Dodd 1989)
	Indiana (Smith and Iverson 2002)	Missouri (Glorioso et al. 2010)	Illinois (Cagle 1942)
	Ontario (Edmonds and Brooks 1996)	Various locations pooled (Tinkle 1961)	Michigan (Risley 1933)
	Texas (Swannack and Rose 2003; Munscher et al. 2019)		
	Virginia (Holinka et al. 2003)		
<i>Trachemys scripta elegans</i>	Florida (Aresco 2005)	Florida (Aresco 2005)	Illinois (Cagle 1942)
	Oklahoma (Hays and McBee 2010)	Illinois (Cagle 1950)	North Carolina (Hanscom et al. 2020)
		Missouri (Glorioso et al. 2010)	
		Oklahoma (Hays and McBee 2010)	
		Texas (Munscher et al. 2019)	

both *C. serpentina* and *S. odoratus* had significantly male-biased sex ratios in Dewart Lake. The observed sex ratios for these five species of freshwater turtles in Dewart Lake are within the variations in sex ratios found in previous studies conducted throughout the United States and Canada, in which each of the species had populations with biased and unbiased sex ratios (Table

2). In at least some populations, there is evidence that the observed sex ratio bias is real and not due to trapping bias (e.g., Swannack and Rose 2003). It is not clear why there is variation in the observed sex ratios among the freshwater turtle species in Dewart Lake; however, given the consistency of the ratios across our study period, any explanation for them must account for the relatively

long-term difference rather than one that has changed just in recent decades. Similarly, it is not clear why there are differences in sex ratios among populations in cases when there are no obvious anthropogenic factors that could potentially be driving them.

Conclusions

In conclusion, many turtle populations and species are in decline and at risk due to anthropogenic alterations of the environment (Lovich et al. 2018). Our failure to observe changes in sex ratios over the course of this study is also consistent with our failure to observe any temporal trends in the frequency of shell anomalies in this community of turtles over the study period (Smith et al. 2020). The fact that we have found no changes in the sex ratios or frequencies of anomalies in most of the species in Dewart Lake does not preclude any other impacts of the anthropogenic factors on these populations. For example, road mortality may not be as sex-biased towards females as has previously been assumed (Carstairs et al. 2018). In addition, we have observed temporal shifts in the anthropogenic pressures in this community of turtles (e.g., changes in injuries due to boat collisions coinciding with changes in recreational boat use due to economic factors; Smith et al. 2006, 2018). Indeed, there is some evidence for a decline in *C. picta* in Dewart Lake (Smith et al. 2006). Thus, the factors that may contribute to turtle declines are likely not universal, nor do they affect all populations or species similarly, suggesting that we must continue to seek explanations for the observed declines in some turtle populations, but also explanations for why other populations and species do not show such effects. In other words, any homogeneity of response to anthropogenic factors across species of freshwater turtles, or even populations of the same species, should not be assumed.

Tribute to Joseph Mitchell. In June of 1979, Joe Mitchell published a request for information on cannibalism in reptiles in *Herpetological Review* 10(2): 57 (eventually published as an SSAR *Herpetology Circular* in 1986). In response, on 23 July 1979, John Iverson mailed Joe one of his papers demonstrating cannibalism in *Cyclura*. Joe's kind response dated 1 August 1979 informed John of his recent initiation of a long-term field study of the turtles in sites near Richmond, Virginia, and that this work would form the basis of his dissertation through the University of Tennessee. The next week they met for the first time at the annual herpetological meetings in Knoxville, and based on their shared interest in Musk Turtles (*Sternotherus odoratus*), began a life-long friendship. Over the years, they corresponded regularly and co-authored a piece on the importance of herpetological societies and graduate education for supporting education in herpetology in 1998, and a note on kyphosis in Map Turtles in 2019. Joe's influence on

and collegiality with John Iverson and so many other herpetologists will remain a huge legacy, along with his over 500 publications. Joe is sorely missed, especially by those of us who call ourselves natural historians.

Acknowledgments.—We thank the many students, colleagues, and family members who helped catch and process turtles at Dewart Lake over the 36 years of the study. Funding was provided by Earlham College, Denison University, and our families. We thank Quaker Haven Camp for housing, the Neff and Mullen families for storing equipment, B. Haubrich for use of his pier, and W. and M. Rogers, T. and J. Smith, and B. Haubrich for conversations about the changes in Dewart Lake since the 1950s. Turtles were captured, held, and released under annual permits from the Indiana Department of Natural Resources, and the turtles were treated in accordance with guidelines established by the American Society of Ichthyologists and Herpetologists.

Literature Cited

- Anderson RV, Gutierrez ML, Romano MA. 2002. Turtle habitat use in a reach of the Upper Mississippi River. *Journal of Freshwater Ecology* 17: 171–177.
- Aresco MJ. 2005. The effect of sex-specific terrestrial movements and roads on the sex ratio of freshwater turtles. *Biological Conservation* 123: 37–44.
- Aresco MJ, Gunzburger MS. 2007. Ecology and morphology of *Chelydra serpentina* in northwestern Florida. *Southeastern Naturalist* 6: 435–448.
- Balcombe JP, Licht LE. 1987. Some aspects of the ecology of the Midland Painted Turtle, *Chrysemys picta marginata*, in Wye Marsh, Ontario. *Canadian Field-Naturalist* 101: 98–100.
- Barrett Beehler KM. 2007. An investigation of the abundance and key habitat parameters of the Northern Map Turtle (*Graptemys geographica*) in an eastern Ontario Bay: a baseline study. M.S. Thesis, University of Waterloo, Waterloo, Ontario, Canada. 99 p.
- Bayless LE. 1975. Population parameters for *Chrysemys picta* in a New York pond. *American Midland Naturalist* 93: 168–176.
- Bowne DR, Cosentino BJ, Anderson LJ, Bloch CP, Cooke S, Crumrine PW, Dallas J, Doran A, Dosch JJ, Druckenbrod DL, et al. 2018. Effects of urbanization on the population structure of freshwater turtles across the United States. *Conservation Biology* 32: 1,150–1,161.
- Browne CL, Hecnar SJ. 2005. Capture success of Northern Map Turtles (*Graptemys geographica*) and other turtle species in basking and baited hoop traps. *Herpetological Review* 36: 145–147.
- Bull JJ. 1985. Sex ratios and nest temperature in turtles: comparing field and laboratory data. *Ecology* 66: 1,115–1,122.
- Bulté G, Blouin-Demers G. 2009. Does sexual

- bimaturation affect the cost of growth and the optimal sex ratio in an extremely size-dimorphic reptile? *Écoscience* 16: 175–182.
- Butler CJ. 2019. A review of the effects of climate change on chelonians. *Diversity* 11: 138.
- Cagle FR. 1942. Turtle populations in southern Illinois. *Copeia* 1942: 155–162.
- Cagle FR. 1950. The life history of the Slider Turtle, *Pseudemys scripta troosti* (Holbrook). *Ecological Monographs* 20: 31–54.
- Carstairs S, Dupuis-Desormeaux M, Davy CM. 2018. Revisiting the hypothesis of sex-biased turtle road mortality. *Canadian Field-Naturalist* 132: 289–295.
- Carter AW, Bowden RM, Paitz RT. 2017. Seasonal shifts in sex ratios are mediated by maternal effects and fluctuating incubation temperatures. *Functional Ecology* 31: 876–884.
- Carter AW, Sadd BM, Tuberville TD, Paitz RT, Bowden RM. 2018. Short heat waves during fluctuating incubation regimes produce females under temperature-dependent sex determination with implications for sex ratios in nature. *Scientific Reports* 8: 3.
- Conner CA, Douthitt BA, Ryan TJ. 2005. Descriptive ecology of a turtle assemblage in an urban landscape. *American Midland Naturalist* 153: 428–435.
- DeCatanzaro R, Chow-Fraser P. 2010. Relationship of road density and marsh condition to turtle assemblage characteristics in the Laurentian Great Lakes. *Journal of Great Lakes Research* 36: 357–365.
- Dodd CK Jr. 1989. Population structure and biomass of *Sternotherus odoratus* (Testudines: Kinosternidae) in a northern Alabama lake. *Brimleyana* 15: 47–56.
- Dodd KL, Murdock C, Wibbels T. 2006. Interclutch variation in sex ratios produced at pivotal temperature in the Red-eared Slider, a turtle with temperature-dependent sex determination. *Journal of Herpetology* 40: 544–549.
- DonnerWright DM, Bozek MA, Probst SR, Anderson EM. 1999. Responses of a turtle assemblage to environmental gradients in the St. Croix River in Minnesota and Wisconsin, USA. *Canadian Journal of Zoology* 77: 989–1,000.
- Dorland A, Rytwinski T, Fahrig L. 2014. Do roads reduce Painted Turtle (*Chrysemys picta*) populations? *PLoS One* 9: e98414.
- Dupuis-Désormeaux M, D'Elia V, Burns R, White B, MacDonald SE. 2019. A turtle population study in an isolated urban wetland complex in Ontario reveals a few surprises. *FACETS* 4: 584–597.
- Dupuis-Désormeaux M, D'Elia V, Cook C, Pearson J, Adhikari V, MacDonald S. 2017. Remarkable male bias in a population of Midland Painted Turtles (*Chrysemys picta marginata*) in Ontario, Canada. *Herpetological Conservation and Biology* 12: 225–232.
- Edmonds JH, Brooks RJ. 1996. Demography, sex ratio, and sexual size dimorphism in a northern population of Common Musk Turtles (*Sternotherus odoratus*). *Canadian Journal of Zoology* 74: 918–925.
- Ernst CH, Lovich JE. 2009. *Turtles of the United States and Canada, 2nd Edition*. Johns Hopkins University Press, Baltimore, Maryland, USA. 840 p.
- Escoriza D, Franch M, Ramos S, Sunyer-Sala P, Boix D. 2020. Demographics and survivorship in the European Pond Turtle (*Emys orbicularis*) in a 31-year study. *Herpetological Conservation and Biology* 15: 41–48.
- Ewert MA, Etchberger CR, Nelson CE. 2004. Turtle sex-determining modes and TSD patterns, and some TSD pattern correlates. Pp. 21–32 In: *Temperature-dependent Sex Determination in Vertebrates*. Editors, Valenzuela N, Lance V. Smithsonian Institution Press, Washington, DC, USA. 194 p.
- Ewert MA, Lang JW, Nelson CE. 2005. Geographic variation in the pattern of temperature-dependent sex determination in the American Snapping Turtle (*Chelydra serpentina*). *Journal of Zoology* 265: 81–95.
- Fisher RA. 1958. *The Genetical Theory of Natural Selection*. Dover Publications, New York, New York, USA. 310 p.
- Flaherty NC. 1982. Home range, movement, and habitat selection in a population of Map Turtle, *Graptemys geographica* (LeSueur), in southwestern Quebec. M.S. Thesis, McGill University, Montreal, Quebec, Canada. 57 p.
- Frederick JE. 2018. Daily temperature extremes and precipitation across Indiana over a 120-year period. *Proceedings of the Indiana Academy of Science* 127: 140–152.
- Freedberg S, Bowne DR. 2006. Monitoring juveniles across years reveals non-Fisherian sex ratios in a reptile with environmental sex determination. *Evolutionary Ecology Research* 8: 1,499–1,510.
- Freedberg S, Lee C, Pappas M. 2011. Agricultural practices alter sex ratios in a reptile with environmental sex determination. *Biological Conservation* 144: 1,159–1,166.
- Froese AD, Burghardt GM. 1975. A dense natural population of the Common Snapping Turtle (*Chelydra s. serpentina*). *Herpetologica* 31: 204–208.
- Galbraith DA, Bishop CA, Brooks RJ, Simser WL, Lampman KP. 1988. Factors affecting the density of populations of Common Snapping Turtles (*Chelydra serpentina serpentina*). *Canadian Journal of Zoology* 66: 1,233–1,240.
- Gibbons JW. 1968. Population structure and survivorship in the Painted Turtle, *Chrysemys picta*. *Copeia* 1968: 260–268.
- Gibbons JW. 1970. Sex ratios in turtles. *Researches in Population Ecology* 12: 252–254.
- Gibbons JW. 1990. Sex ratios and their significance among turtle populations. Pp. 171–182 In: *Life History and Ecology of the Slider Turtle*. Editor: Gibbons JW.

- Smithsonian Institution Press, Washington, DC, USA. 368 p.
- Gibbons JW, Scott DE, Ryan TJ, Buhlmann KA, Tuberville TD, Metts BS, Greene JL, Mills T, Leiden Y, Poppy S, et al. 2000. The global decline of reptiles, déjà vu amphibians. *BioScience* 50: 653–666.
- Gibbs JP, Steen DA. 2005. Trends in sex ratios of turtles in the United States: implications of road mortality. *Conservation Biology* 19: 552–556.
- Glorioso BM, Vaughn AJ, Waddle JH. 2010. The aquatic turtle assemblage inhabiting a highly altered landscape in southeast Missouri. *Journal of Fish and Wildlife Management* 1(2): 161.
- Gordon DM, MacCulloch RD. 1980. An investigation of the ecology of the Map Turtle, *Graptemys geographica* (LeSueur), in the northern part of its range. *Canadian Journal of Zoology* 58: 2,210–2,219.
- Hanscom RJ, Dinkelacker SA, McCall AJ, Parlin AF. 2020. Demographic traits of freshwater turtles in a maritime forest habitat. *Herpetologica* 76: 12–21.
- Hays KA, McBee K. 2010. Population demographics of Red-eared Slider Turtles (*Trachemys scripta*) from Tar Creek Superfund Site. *Journal of Herpetology* 44: 441–446.
- Holinka AM, Dave R, Chambers RM. 2003. Population ecology of Musk Turtles (*Sternotherus odoratus*) in a lake in Virginia. *Chelonian Conservation and Biology* 4: 721–725.
- Iverson JB. 1979. Another inexpensive turtle trap. *Herpetological Review* 10: 55.
- Iverson JB, Smith GR, Rettig JE. 2019. Body size, growth, and longevity in Northern Map Turtles (*Graptemys geographica*) in Indiana. *Journal of Herpetology* 53: 297–301.
- Janzen FJ. 1992. Heritable variation for sex ratio under environmental sex determination in the Common Snapping Turtle (*Chelydra serpentina*). *Genetics* 131: 155–161.
- Janzen FJ. 1994. Climate change and temperature-dependent sex determination in reptiles. *Proceedings of the National Academy of Sciences of the United States of America* 91: 7,487–7,490.
- Johnston GR, Johnston JC, Denton M. 2008. Ecology of a freshwater turtle guild in a southern Florida canal system. *Florida Scientist* 71: 360–369.
- Jones RL. 2017. Long-term trends in Ringed Sawback (*Graptemys oculifera*) growth, survivorship, sex ratios, and population sizes in the Pearl River, Mississippi. *Chelonian Conservation and Biology* 16: 215–228.
- Kolbe JJ, Janzen FJ. 2002. Impact of nest-site selection on nest success and nest temperature in natural and disturbed habitats. *Ecology* 83: 269–281.
- Lagler KF, Applegate VC. 1943. Relationship between the length and the weight in the Snapping Turtle *Chelydra serpentina* Linnaeus. *American Naturalist* 77: 476–478.
- Lambertucci SA, Carrete M, Donazar JA, Hiraldo F. 2012. Large-scale age-dependent skewed sex ratio in a sexually dimorphic avian scavenger. *PLoS One* 7: e46347.
- LeBlanc AM, Wibbels T. 2009. Effect of daily water treatment on hatchling sex ratios in a turtle with temperature-dependent sex determination. *Journal of Experimental Zoology* 311A: 68–72.
- Lewis EL, Iverson JB, Smith GR, Rettig JE. 2018. Body size and growth in the Red-eared Slider (*Trachemys scripta elegans*) at the northern edge of its range: Does Bergmann's Rule apply? *Herpetological Conservation and Biology* 13: 700–710.
- Lindeman PV. 1996. Comparative life history of Painted Turtles (*Chrysemys picta*) in two habitats in the inland Pacific Northwest. *Copeia* 1996: 114–130.
- Lindeman PV. 2013. *The Map Turtle and Sawback Atlas: Ecology, Evolution, Distribution, and Conservation*. University of Oklahoma Press, Norman, Oklahoma, USA. 488 p.
- Lovich JE, Ennen JR, Agha M, Gibbons JW. 2018. Where have all the turtles gone, and why does it matter? *BioScience* 68: 771–781.
- Lovich JE, Gibbons JW, Agha M. 2014. Does the timing of attainment of maturity influence sexual size dimorphism and adult sex ratio in turtles? *Biological Journal of the Linnean Society* 112: 142–149.
- Major PD. 1975. Density of Snapping Turtles, *Chelydra serpentina*, in western West Virginia. *Herpetologica* 31: 332–335.
- Mali I, Dickerson BE, Brown DJ, Dixon JR, Forstner MRJ. 2013. Road density not a major driver of Red-eared Slider (*Trachemys scripta elegans*) population demographics in the lower Rio Grande Valley of Texas. *Herpetological Conservation and Biology* 8: 131–140.
- Marchand MN, Litvaitis JA. 2004. Effects of habitat features and landscape composition on the population structure of a common aquatic turtle in a region undergoing rapid development. *Conservation Biology* 18: 758–767.
- Mitchell TS, Janzen FJ. 2019. Substrate influences turtle nest temperature, incubation period, and offspring sex ratio in the field. *Herpetologica* 75: 57–62.
- Moldowan PD, Brooks RJ, Litzgus JD. 2018. Sex-biased seasonal capture rates in Painted Turtle (*Chrysemys picta*). *Canadian Field-Naturalist* 132: 20–24.
- Mondol S, Mailand CR, Wasser SK. 2014. Male biased sex ratio of poached elephants is negatively related to poaching intensity over time. *Conservation Genetics* 15: 1,259–1,263.
- Mosimann JE, Bider JR. 1960. Variation, sexual dimorphism, and maturity in a Quebec population of the Common Snapping Turtle, *Chelydra serpentina*. *Canadian Journal of Zoology* 38: 19–38.
- Munscher EC, Walde AD, Riedle JD, Ross SG, Salvatico N, Collins C, Farris M, Butterfield BP, Hauge JB. 2019.

- Turtle assemblage in a highly altered spring system: Comal Springs, Texas. *Southwestern Naturalist* 64: 109–121.
- Neuwald JL, Valenzuela N. 2011. The lesser-known challenge of climate change: thermal variance and sex-reversal in vertebrates with temperature-dependent sex determination. *PLoS One* 6(3): e18117.
- Nicholson EG, Manzo S, Devereux Z, Morgan TP, Fisher RN, Brown C, Dugit R, Scott PA, Shaffer HB. 2020. Historical museum collections and contemporary population studies implicate roads and introduced predatory Bullfrogs in the decline of Western Pond Turtles. *PeerJ* 8: e9248.
- Piczak ML, Markle CE, Chow-Fraser P. 2019. Decades of road mortality cause severe decline in a Common Snapping Turtle (*Chelydra serpentina*) population from an unbiased method. *Chelonian Conservation and Biology* 18: 231–240.
- Pitt AL, Nickerson MA. 2012. Reassessment of the turtle community in the north fork of White River, Ozark County, Missouri. *Copeia* 2012: 367–374.
- Pluto TG, Bellis ED. 1986. Habitat utilization by the turtle *Graptemys geographica* along a river. *Journal of Herpetology* 20: 22–31.
- Readel AM, Dreslik MJ, Warner JK, Banning WJ, Phillips CA. 2008. A quantitative method for sex identification in emydid turtles using secondary sexual characters. *Copeia* 2008: 643–647.
- Ream C, Ream R. 1966. The influence of sampling methods on the estimate of population structure in Painted Turtles. *American Midland Naturalist* 75: 325–338.
- Refsnider JM, Milne-Zelman C, Warner DA, Janzen FJ. 2014. Population sex ratios under differing local climates in a reptile with environmental sex determination. *Evolutionary Ecology* 28: 977–989.
- Rhen T, Lang JW. 1998. Among-family variation for environmental sex determination in reptiles. *Evolution* 52: 1,514–1,520.
- Risley PL. 1930. Anatomical differences in the sexes of the Common Musk Turtle, *Sternotherus odoratus* (Latreille). *Papers of the Michigan Academy of Science, Arts, and Letters* 11: 445–464.
- Risley PL. 1933. Observations on the natural history of the Common Musk Turtle, *Sternotherus odoratus* (Latreille). *Papers of the Michigan Academy of Science, Arts, and Letters* 17: 685–711.
- Schwanz LE, Spencer RJ, Bowden RM, Janzen FJ. 2010. Climate and predation dominate juvenile and adult recruitment in a turtle with temperature-dependent sex determination. *Ecology* 91: 3,016–3,026.
- Schwarzkopf L, Brooks RJ. 1985. Sex determination in Northern Painted Turtles: effect of incubation at constant and fluctuating temperatures. *Canadian Journal of Zoology* 63: 2,543–2,547.
- Schwarzkopf L, Brooks RJ. 1987. Nest-site selection and offspring sex ratio in Painted Turtles, *Chrysemys picta*. *Copeia* 1987: 55–61.
- Sexton OJ. 1959. Spatial and temporal movements of a population of the Painted Turtle, *Chrysemys picta marginata* (Agassiz). *Ecological Monographs* 29: 113–140.
- Sharma K, Bayrakkismith R, Tumursukh L, Johansson O, Sevger P, McCarthy T, Mishra C. 2014. Vigorous dynamics underline a stable population of the Endangered Snow Leopard *Panthera uncia* in Tost Mountains, South Gobi, Mongolia. *PLoS One* 9: e101319.
- Sifuentes-Romero I, Tezak BM, Milton SL, Wyneken J. 2018. Hydric environmental effects on turtle development and sex ratio. *Zoology* 126: 89–97.
- Smith GR, Iverson JB. 2002. Sex ratio of Common Musk Turtles (*Sternotherus odoratus*) in a north-central Indiana lake: a long-term study. *American Midland Naturalist* 148: 185–189.
- Smith GR, Iverson JB. 2004. Diel activity patterns of the turtle assemblage of a northern Indiana lake. *American Midland Naturalist* 152: 156–164.
- Smith GR, Iverson JB. 2006. Changes in sex ratio over time in the Endangered iguana *Cyclura cychlura inornata*. *Canadian Journal of Zoology* 84: 1,522–1,527.
- Smith GR, Iverson JB, Rettig JE. 2006. Changes in a turtle community from a northern Indiana lake: a long-term study. *Journal of Herpetology* 40: 180–185.
- Smith GR, Iverson JB, Rettig JE. 2018. Frequency of propeller damage in a turtle community in a northern Indiana, USA, lake: a long-term study. *Herpetological Conservation and Biology* 13: 691–699.
- Smith GR, Rettig JE, Iverson JB. 2017. Is righting response lateralized in two species of freshwater turtles? *Behaviour* 154: 1,069–1,079.
- Smith GR, Rettig JE, Iverson JB. 2020. Frequencies of and temporal trends in shell anomalies in a turtle community in a northern Indiana lake. *Chelonian Conservation and Biology* 19: 277–282.
- Steen DA, Gibbs JP. 2004. Effects of roads on the structure of freshwater turtle populations. *Conservation Biology* 18: 1,143–1,148.
- St Juliana JR, Bowden RM, Janzen FJ. 2004. The impact of behavioral and physiological maternal effects on offspring sex ratio in the Common Snapping Turtle, *Chelydra serpentina*. *Behavioral Ecology and Sociobiology* 56: 270–278.
- Swannack TM, Rose FL. 2003. Seasonal and ontogenetic changes in the sex ratio of a population of Stinkpots (Kinosternidae: *Sternotherus odoratus*). *Southwestern Naturalist* 48: 543–549.
- Thomas RB, Vogrin N, Altig R. 1999. Sexual and seasonal differences in behavior of *Trachemys scripta* (Testudines: Emydidae). *Journal of Herpetology* 33: 511–515.
- Thompson MM, Coe BH, Andrews RM, Stauffer DF, Cristol DA, Crossley DA II, Hopkins WA. 2018. Major global changes interact to cause male-biased

Turtle sex ratios in Indiana (1979–2014)

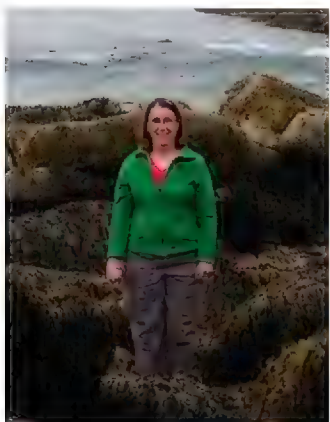
- sex ratios in a reptile with temperature-dependent sex determination. *Biological Conservation* 222: 20–24.
- Tinkle DW. 1961. Geographic variation in reproduction, size, sex ratio, and maturity of *Sternothaerus odoratus* (Testudinata: Chelydridae). *Ecology* 42: 68–76.
- Tucker JK, Dolan CR, Lamer JT, Dustman EA. 2008. Climate warming, sex ratios, and Red-eared Sliders (*Trachemys scripta elegans*) in Illinois. *Chelonian Conservation and Biology* 7: 60–69.
- Valenzuela N, Literman R, Neuwald JL, Mizoguchi B, Iverson JB, Riley JL, Litzgus JD. 2019. Extreme thermal fluctuations from climate change unexpectedly accelerate demographic collapse of vertebrates with temperature-dependent sex determination. *Scientific Reports* 9: 4254.
- Vanek JP, Glowacki GA. 2019. Assessing the impacts of urbanization on sex ratios of Painted Turtles (*Chrysemys picta*). *Diversity* 11: 72.
- Vogt RC. 1980. Natural history of the Map Turtle *Graptemys pseudogeographica* and *G. ouachitensis* in Wisconsin. *Tulane Studies in Zoology and Botany* 22: 17–48.
- Vogt RC, Bull JJ. 1984. Ecology of hatchling sex ratios in Map Turtles. *Ecology* 65: 582–587.
- Wade SE, Gifford CE. 1965. A preliminary study of the turtle population of a northern Indiana lake. *Proceedings of the Indiana Academy of Science* 74: 371–374.
- Weisrock DW, Janzen FJ. 1999. Thermal and fitness-related consequences of nest location in Painted Turtles (*Chrysemys picta*). *Functional Ecology* 13: 94–101.
- Winchell KM, Gibbs JP. 2016. Golf courses as habitat for aquatic turtles in urbanized landscapes. *Landscape and Urban Planning* 147: 59–70.
- Zweifel RG. 1989. Long-term ecological studies on a population of Painted Turtles, *Chrysemys picta*, on Long Island, New York. *American Museum Novitates* 2952: 1–55.



Geoffrey R. Smith received his Ph.D. in Biological Sciences from the University of Nebraska-Lincoln and is a Professor of Biology at Denison University in Granville, Ohio, USA. Geoff started studying turtles at Dewart Lake as a first-year undergraduate student at Earlham College (Richmond, Indiana, USA), and he served as the Editor of the *Journal of Herpetology* from 2006–2008. His research focuses on how human modifications of the environment affect amphibian and reptile populations and communities. *Photo by Michael McKinney.*



John B. Iverson is a Biology Research Professor at Earlham College (Richmond, Indiana, USA). He is currently on the steering committees (and a founding member) of the IUCN/SSC Tortoise and Freshwater Turtle Specialist Group, and the Iguana Specialist Group. He serves on the Boards of the Turtle Survival Alliance and the Turtle Conservation Fund. He has maintained long-term field research sites for turtles at the Crescent Lake National Wildlife Refuge in western Nebraska since 1981, and for rock iguanas in the Exumas in the Bahamas since 1980. *Photo by Matt Lachiusa.*



Jessica E. Rettig received her Ph.D. in Zoology and Ecology, Evolutionary Biology, and Behavior from Michigan State University (East Lansing, Michigan, USA) and is a Professor of Biology at Denison University in Granville, Ohio, USA. Jessica started her field biology career as an undergraduate at Earlham College (Richmond, Indiana, USA). Her research focuses on examining community dynamics within small ponds. *Photo by Geoff Smith.*